

# GLP1 Receptor – Type 2 Diabetes Target

## Stabilization of GLP1R by NativeMP™ Platform

- Full-length
- First ever stabilized wild-type
- Native host cell lipid environment
- Function and stability preserved
- Available in mg amounts
- Assay development at body temperature possible

## Purity of sample

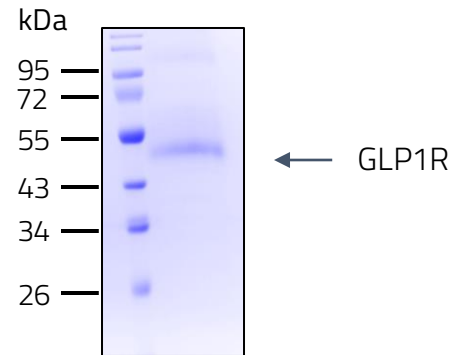


Fig. 1: SDS-PAGE

## Homogeneity of sample

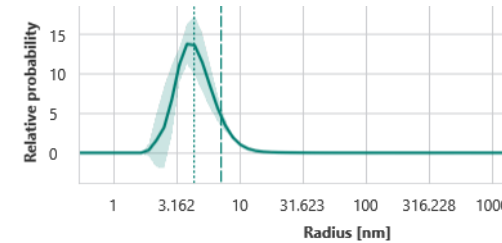


Fig. 2: DLS- analysis

## MST\* assay confirmed antagonist binding

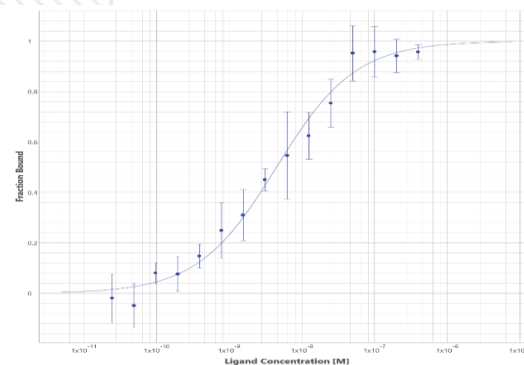


Fig. 3: GLP1R binds the antagonist Exendin4 (AS 9-39) with high affinity (4.5 nM)\*measured at 25°C

## New small molecule binder found by AS-MS\*

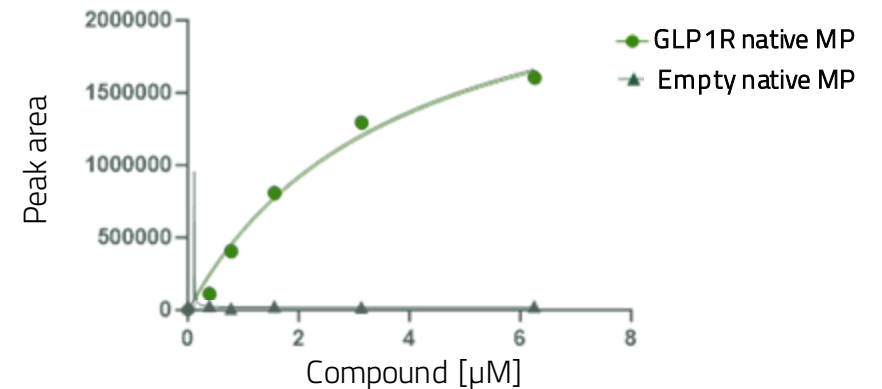


Fig. 4: New GLP1R binder in low micromolar range from first screening library with (< 5k compounds)

\* Measured affinity similar to literature references (2-6 nM in cell-based assays)

\* Measured in cooperation with Momentum Biotechnologies